

xiaomi Vacuum Cleaner G20 Max User Manual



Safety Instructions

This product is for household use only. Read this manual carefully before use, and retain it for future reference.

- This appliance can be used by children aged from 8 years and above and persons with reduced physical, sensory or mental capabilities or lack of experience and knowledge if they have been given supervision or instruction concerning use of the appliance in a safe way and understand the hazards involved. Children shall not play with the appliance. Cleaning and user maintenance shall not be made by children without supervision.
- This appliance contains batteries that are only replaceable by skilled persons.
- The appliance is only to be used with the power supply unit provided with the appliance.
- This vacuum cleaner is for indoor use only. Do not use or install it in outdoor, industrial, or commercial environments.
- Do not charge or store the vacuum cleaner near heat sources or in humid areas, such as by a radiator or in a kitchen or bathroom.
- Be aware of the risk of terminals of the battery-operated appliance or battery being short-circuited by metal objects.
- Do not touch the plug or any electrical part with wet hands.
- Only use replacement parts that are approved by Xiaomi.
- Before installing, removing or replacing any parts, or cleaning or maintaining the vacuum cleaner, make sure to turn it off and unplug the power supply to prevent personal injury.
- To reduce the risk of fire, explosion, or personal injury, check before use to make sure the power supply is undamaged. Do not use the vacuum cleaner if the power supply is damaged.
- Do not block the air inlet or outlet to prevent the vacuum cleaner from overheating and becoming damaged.
- Do not place any objects on the vacuum cleaner's suction opening.
- Do not use the vacuum cleaner if any part of it is damaged or not installed correctly.
- When lifting or carrying the vacuum cleaner, make sure it is turned off, otherwise there may be a risk of personal injury.
- During use of the vacuum cleaner, keep its moving parts such as the brush head away from people and pets.
- When using the vacuum cleaner to clean stairs, make sure to pay attention to personal safety.
- Do not use the vacuum cleaner to clean up fine dust, such as drywall dust or fireplace ash.
- Do not use the vacuum cleaner to clean up smoking or burning materials such as charcoal, cigarette butts, or matches.
- Do not use the vacuum cleaner to clean up sharp or hard objects, such as glass, nails, screws, or coins.
- Do not use the vacuum cleaner to clean up highly greasy, sticky, or pigmented stains such as shoe polish, paint, or pigments.
- Do not use the vacuum cleaner to clean up flammable or explosive liquids such as gasoline, or any toxic solutions such as chlorine bleach, ammonia, or drain cleaner.
- Do not use the vacuum cleaner to clean up toner or ink used in laser printers or photocopiers, as this may cause fire or explosion.
- Do not lean the vacuum cleaner on unstable objects such as chairs or tables, as it may fall over and cause damage or injury.
- Do not submerge the vacuum cleaner or any of its parts in water or any other liquid for cleaning. After cleaning or maintenance of the vacuum cleaner, make sure that all parts of it are fully dry before reinstallation and use.
- Do not use the vacuum cleaner if its opening is blocked. Keep free of dust, lint, hair, or other debris with regular cleaning; otherwise, the airflow may be compromised.
- If the vacuum cleaner has the problem of overheating, strange noise, odor, or weak suction power, contact the official after-sales service team. Do not repair it by yourself.
- The vacuum cleaner should only be repaired by the official after-sales service team to ensure it remains safe to use.
- Do not use any third-party battery or power supply.
- Do not expose the appliance or battery to excessive temperatures.
- Be aware of the risk of terminals of the battery-operated appliance or battery being short-circuited by metal objects.
- If the power supply is damaged, it must be replaced by a professional from the manufacturer, after-sales service department, or similar department to avoid safety hazards.
- Fire Hazard Warning: Do not apply any type of fragrance to the vacuum cleaner's pre-filter and post-filter. These types of products are known to contain flammable chemicals which may cause the vacuum cleaner to catch fire.
- Strictly follow the instructions in this user manual to charge the vacuum cleaner at an ambient temperature of 0°C to 35°C. Improper charging may result in damage to the battery.
- Please strictly follow the instructions in this user manual when using the vacuum cleaner. Users are responsible for any loss or damage that may arise from improper use of the vacuum cleaner.
- **WARNING:** Only use the supply unit provided with this appliance.
- **WARNING:** For the purposes of recharging the battery, only use the detachable supply unit provided with this appliance.
- Use only with GC32-310100-3A supply unit.

Regulatory Compliance Information



EU Declaration of Conformity

We, Beijing Shunzao Technology Co., Ltd., hereby declare that this equipment is in compliance with the applicable Directives and European Norms, and amendments. The full text of the EU declaration of conformity is available at the following internet address: <http://www.mi.com/global/service/support/declaration.html>

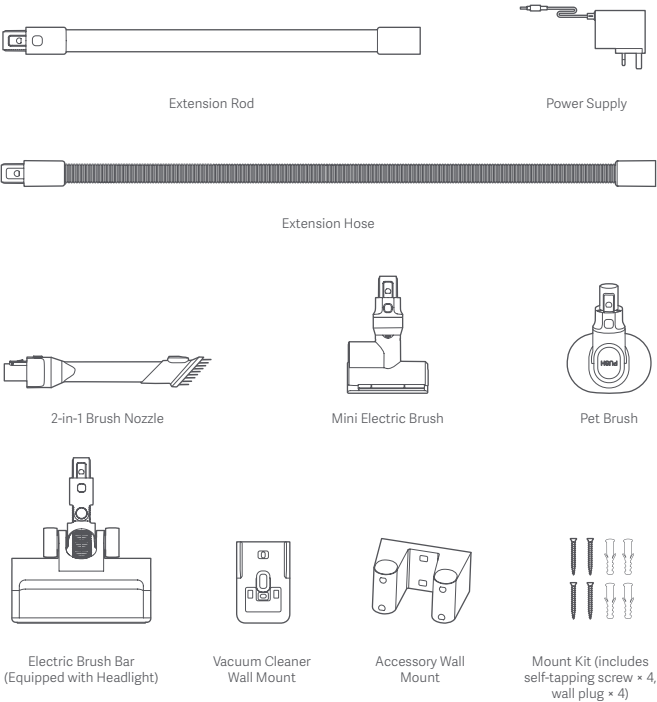


WEEE Disposal and Recycling Information

All products bearing this symbol are waste electrical and electronic equipment (WEEE as in directive 2012/19/EU) which should not be mixed with unsorted household waste. Instead, you should protect human health and the environment by handing over your waste equipment to a designated collection point for the recycling of waste electrical and electronic equipment, appointed by the government or local authorities. Correct disposal and recycling will help prevent potential negative consequences to the environment and human health. Please contact the installer or local authorities for more information about the location as well as terms and conditions of such collection points.

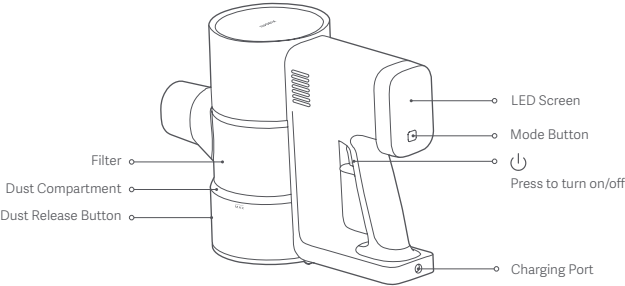
Product Overview

Accessory List

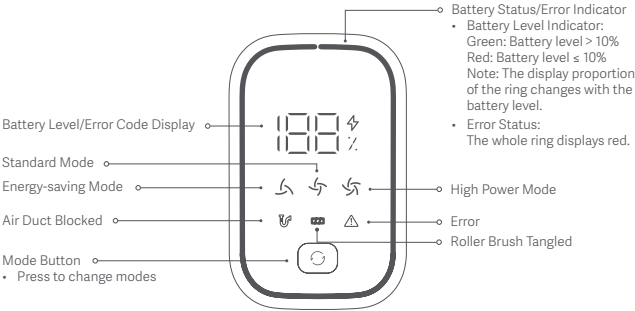


Note: Illustrations of product, accessories, and user interface in the user manual are for reference purposes only. Actual product and functions may vary due to product enhancements.

Vacuum Cleaner



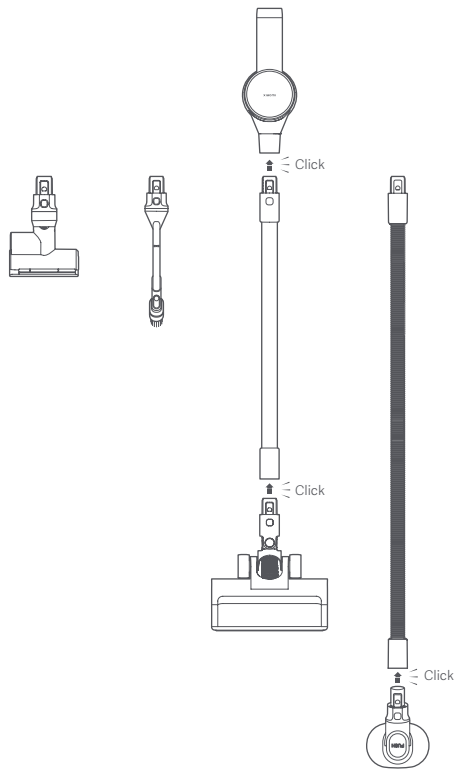
LED Screen



Note: If the vacuum cleaner cannot work properly, the screen will show the relevant error messages. For solutions, refer to the Troubleshooting section. If the issue persists, contact the after-sales service team.

How to Install

Installing the Accessories onto the Vacuum Cleaner

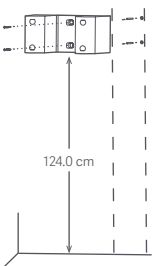


Note: Do not use the extension hose with the electric brush bar or mini electric brush.

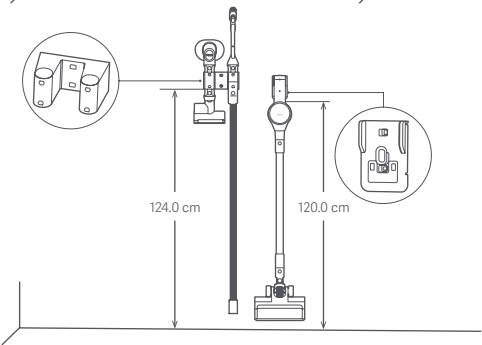
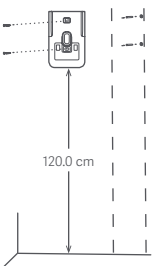
Installing the Vacuum Cleaner Wall Mount and Accessory Wall Mount

1. **Choose the location:** Find a cool and dry place with an electrical outlet nearby and free from obstructions like wires or pipes in the wall. Ensure the accessory wall mount is installed at a height of 124.0 cm from the ground, and the vacuum cleaner wall mount is 120.0 cm, respectively. Maintain a recommended spacing of 15 cm between the two wall mounts.
 2. **Drill the holes:** Make marks on the wall respectively according to the holes on the two wall mounts. Use a power drill with a 5 mm drill bit to drill a hole approximately 40 mm deep in each marked position, and then insert the wall plug into each hole.
 3. **Install the wall mounts:** Align the holes in the wall mounts with the holes drilled in the wall, and then use the self-tapping screw to secure the wall mounts to the wall.
- Note:** Please strictly follow the height as illustrated when installing the two wall mounts to prevent affecting the storage.

Accessory Wall Mount Installation

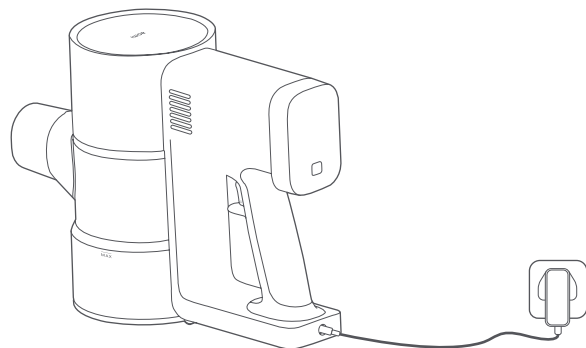


Vacuum Cleaner Wall Mount Installation



Charging

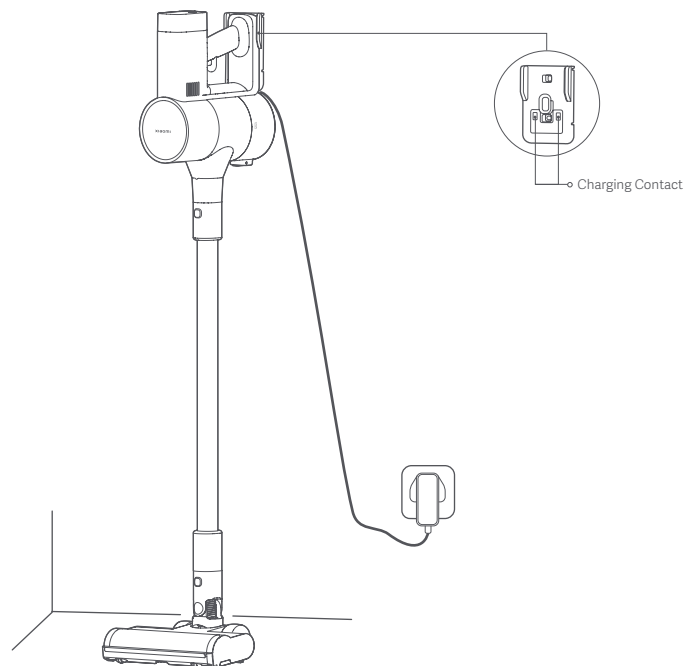
Charging the Vacuum Cleaner



Notes:

- Fully charge the vacuum cleaner before using it for the first time. This will take about 3.5 hours.
- The vacuum cleaner cannot be used while charging.
- Once the vacuum cleaner is fully charged, the indicator will turn off, and the vacuum cleaner will then enter the energy-saving mode.
- Vacuuming in high power mode for a prolonged period will cause the battery to heat up, which could increase the charging time. Allow the vacuum cleaner to cool down for 60 minutes before charging it.

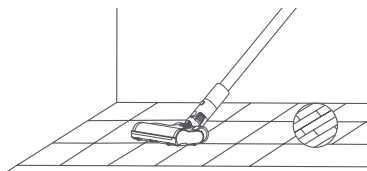
Charging the Vacuum Cleaner via Wall Mount



How to Use

Electric Brush Bar (Equipped with Headlight)

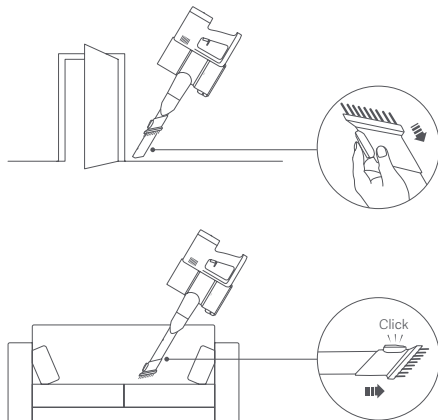
Suitable for cleaning marble floors, wooden floors, and short-pile carpets.



2-in-1 Brush Nozzle

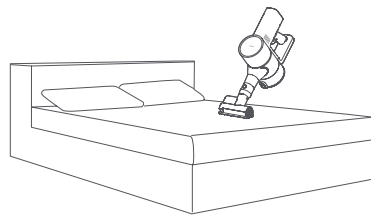
Suitable for cleaning places with crevices, such as keyboards, curtains, sofas, ceilings, corners, and car interiors.

Note: To avoid potential safety hazards, do not expose the vacuum cleaner to direct sunlight or store it in environments with high temperatures like inside a car in summer.



Mini Electric Brush

Suitable for cleaning fabrics such as sofas and mattresses.



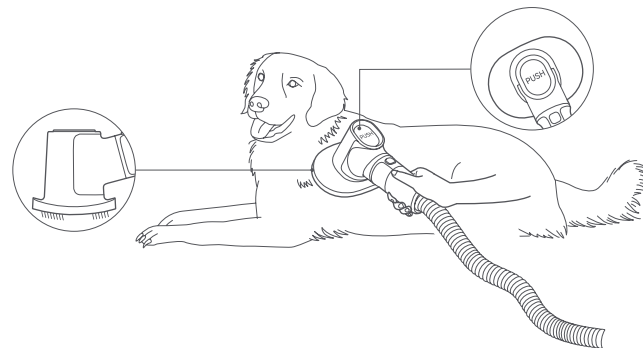
Pet Brush

Suitable for pet hair removal.

- It is recommended to gently brush and clean the pet hair in the direction of hair growth.
- To expand the movement space, connect the extension hose to the vacuum cleaner.
- If pet hair accumulates on the bristles of the pet brush, remove the pet brush from the pet and press the PUSH button to clean the hair from the bristles.

Cautions:

- Stop brushing the pet immediately if your pet shows signs of displeasure or discomfort.
- When brushing the pet, ensure the safety of people and pets to avoid causing hazards.



Care & Maintenance

Cautions:

- Before care and maintenance, unplug the power supply and make sure the vacuum cleaner is turned off.
- Always use genuine parts to ensure normal operation and to keep your warranty valid.
- If the filter, pre-filter, post-filter, extension rod, extension hose, 2-in-1 brush nozzle, or pet brush becomes clogged, the vacuum cleaner will stop working. Turn the vacuum cleaner off and clean the clogged parts before using it again.
- If the electric brush bar or mini electric brush gets blocked, it will stop working but the vacuum cleaner itself will not. Please turn the vacuum cleaner off to clean the electric brush bar or mini electric brush, and then use it again.
- Before cleaning, remove the brush head from the vacuum cleaner to prevent accidentally turning on the vacuum cleaner, which can cause injury.
- If the vacuum cleaner will not be used for an extended period, fully charge it and disconnect it from the power then store it in a cool, low-humidity environment away from direct sunlight.
- To avoid over-discharging the battery, recharge the vacuum cleaner at least once every three months.

Cleaning the Vacuum Cleaner

Wipe the vacuum cleaner with a soft, dry cloth.

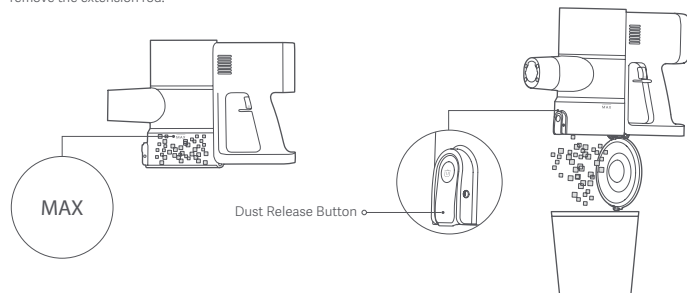


Cleaning the Dust Compartment

The vacuum cleaner's cleaning ability will be reduced if the dust compartment is filled to the "MAX" mark. To regain performance, empty the dust compartment.

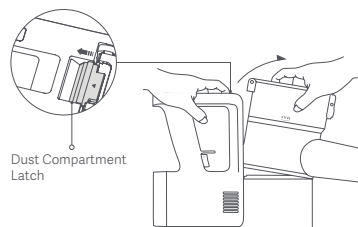
Empty the dust compartment: Hold the dust compartment over a trash bin, then press the dust release button to empty the contents.

Caution: Before cleaning the dust compartment, turn off the vacuum cleaner, disconnect the power supply, and remove the extension rod.

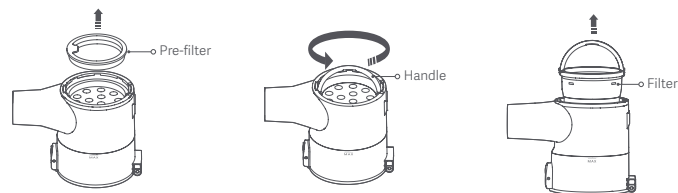


Cleaning the Filter Assembly

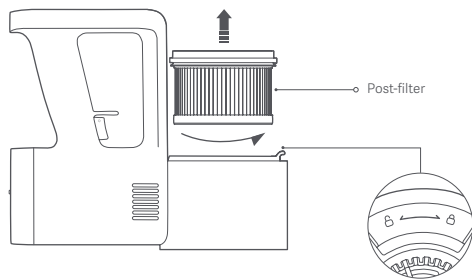
1. As illustrated, release the dust compartment latch to remove the dust compartment outwards.



2. Remove the pre-filter, lift the handle, and twist counterclockwise to take out the filter.



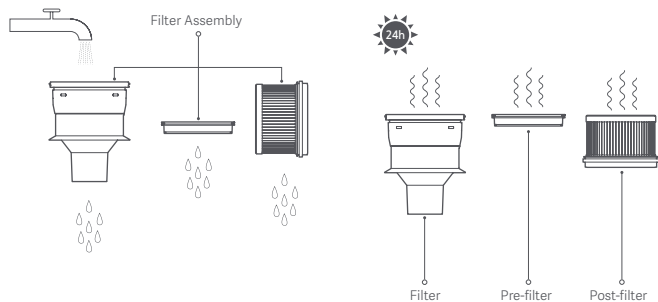
3. Rotate counterclockwise to remove the post-filter.



4. Rinse the filter, pre-filter, and post-filter under running tap water until clean, then set them aside to fully dry for at least 24 hours.

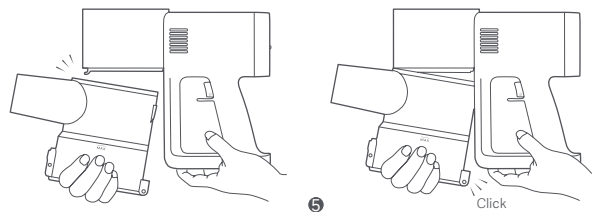
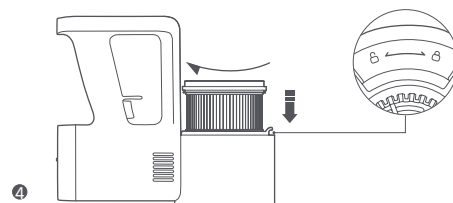
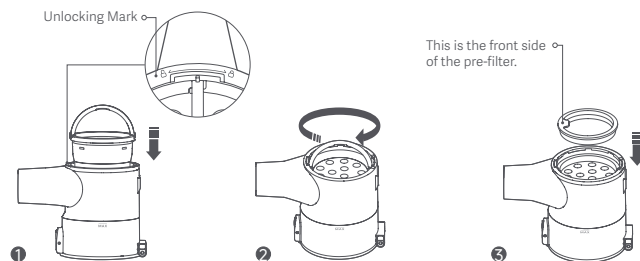
Notes:

- Never soak the pre-filter and post-filter.
- When cleaning the post-filter, rinse it repeatedly and tap its edge lightly to remove any dust and debris until it is clean.
- Do not clean the pre-filter and post-filter with your hands, a brush, or a sharp object to prevent damage.
- If the suction power is still significantly reduced after the pre-filter and post-filter are cleaned, you can try to purchase and replace them with genuine ones.



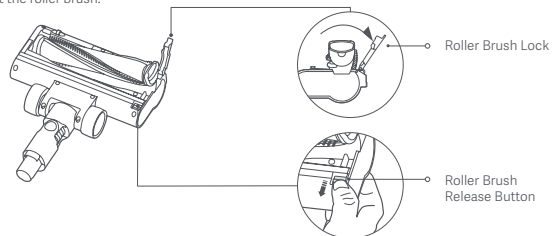
Installing the Filter Assembly

1. Align one end of the filter's handle with the unlocking mark "B" and place the filter vertically into the dust compartment.
2. Hold the handle and turn the filter clockwise until it is secured in place.
3. Insert the pre-filter into place with its front side up.
4. Insert the post-filter into the vacuum cleaner, and turn the post-filter clockwise into position.
5. Reinstall the dust compartment and make sure it is secured into place.

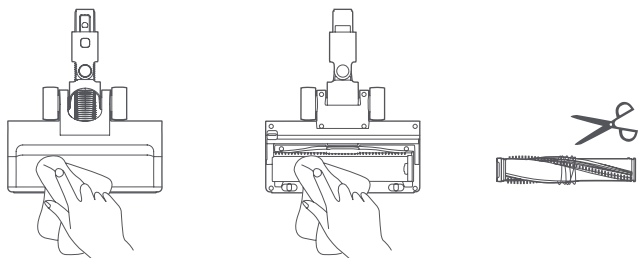


Cleaning the Electric Brush Bar

1. Place the electric brush bar upside down, press the roller brush release button, open the roller brush lock, and take out the roller brush.

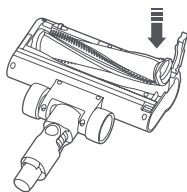


2. Use a dry cloth or paper towel to wipe dust and debris from the suction opening and the transparent cover.
3. Cut any hair tangled around the roller brush, and then clean it.



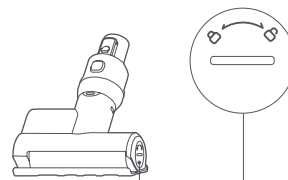
4. Reinstall the roller brush in the correct direction as illustrated, and then press the roller brush lock to secure the roller brush into place.

Caution: Do not clean the electric brush bar with water as it has a built-in motor.

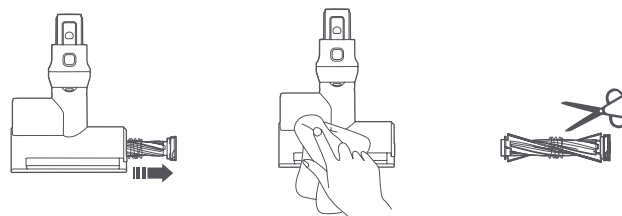


Cleaning the Mini Electric Brush

1. Use a suitable tool to rotate the roller brush clockwise as indicated to remove it.

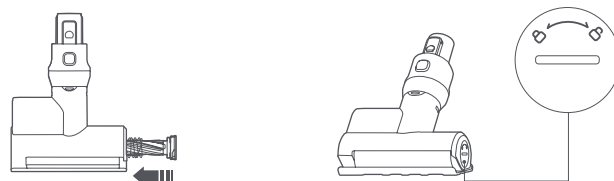


2. Use a dry cloth or paper towel to wipe dust and debris from the suction opening and the transparent cover.
3. Cut any hair tangled around the roller brush, and then clean it.



4. Reinstall the roller brush in the correct direction, and rotate it counterclockwise to lock it into place.

Caution: Do not clean the mini electric brush with water as it has a built-in motor.






Common Issue

Common Issue	Possible Cause	Solution
The vacuum cleaner does not work.	Battery is depleted.	Charge the vacuum cleaner before use.
	The suction opening, air duct, pre-filter, or post-filter is blocked.	Check and clean immediately.
	The filter, pre-filter, or post-filter is not installed in place.	Check and install in place.
	The battery overheat protection is triggered.	Wait until the battery temperature returns to normal, and then try to use it again.
The suction power reduces.	The dust compartment is full, or the pre-filter or the post-filter is blocked.	Check and clean immediately.
	Brush head is clogged.	Clean the brush head.
Low battery life.	Battery is not fully charged.	Charge the vacuum cleaner before use.
	The dust compartment is full, or the pre-filter or the post-filter is blocked.	Check and clean immediately.
	Brush head is clogged.	Clean the brush head.
	The roller brush is stuck by foreign objects.	Remove any foreign object, and then resume use.
The roller brush does not rotate.	The conductive contacts on the brush head or extension rod are dirty.	Turn the vacuum cleaner off, and remove the brush head. Wipe the conductive contacts with a soft, dry cloth, then try again.
The vacuum cleaner does not charge.	The power supply being used is not genuine.	Only use the genuine power supply to charge the vacuum cleaner.
The battery charges slowly.	The battery overheat protection is triggered.	Wait until the battery temperature returns to normal, and then try to use it again.

Note: If the solutions above do not resolve the issue, please contact the after-sales service team.

Troubleshooting

If the vacuum cleaner is not working properly, the screen will show an error message. Refer to the table below for the resolution.

Error	Possible Cause	Solution
	The air duct is blocked.	Check and clean the dust compartment, filter, pre-filter, post-filter, extension rod, extension hose, or brush head.
	The brush head is tangled.	Check and clean the brush head.
	The battery overheat protection is triggered.	Wait until the battery temperature returns to normal, and then try to use it again.
	The screen displays the error code E0, E1, E2, E3, or E4.	Contact the after-sales service team.

Specifications

Xiaomi Vacuum Cleaner G20 Max			
Name	Cordless Vacuum Cleaner	Model	D206
Rated Voltage	25.2 V ==	Rated Power	520 W
Charging Voltage	31.0 V ==	Net Weight	4.25 kg
Power Consumption	Off mode: ≤0.5 W	Time to Enter the Condition	Off mode: ≤20 min

Electric Brush Bar (Equipped with Headlight)			
Model	D206-DS	Rated Voltage	21.6 V ==
Rated Power	30 W		

Mini Electric Brush			
Model	D206-MN	Rated Voltage	21.6 V ==
Rated Power	10 W		

Power Supply			
Manufacturer	FOSHAN SHUNDE GUANYUDA POWER SUPPLY CO., LTD.		
Model	GC32-310100-3A	Average Active Efficiency	87.76%
Rated Input	100–240 V~ 50/60 Hz 1.0 A	Efficiency at Low Load (10%)	81.28%
Rated Output	31.0 V == 1.0 A, 31.0 W	No-load Power Consumption	0.09 W

Environmental Notice

The rechargeable lithium-ion battery pack of this vacuum cleaner contains chemicals that may pollute the environment. Before disposing of the vacuum cleaner, remove the batteries and then discard them at an appropriate recycling facility.

- The battery must be removed from the appliance before it is scrapped.
- The appliance must be disconnected from the supply mains when removing the battery.
- The battery is to be disposed of safely.

Cautions:

- Make sure the vacuum cleaner is disconnected from power and the batteries are fully drained before battery removal.
- Take the removed batteries to the professional recycling facility to properly dispose of them.
- Do not leave the batteries in a high-temperature environment; otherwise, they may explode.
- In the event of a battery leak, avoid contact with the liquid. If the liquid enters the eyes, rinse with plenty of water and seek medical attention immediately.

Steps to Remove the Battery:

1. Remove the five screws from the lower cover of the vacuum cleaner, and take out the lower cover and charging contacts' connection cable.
2. Remove the LED screen assembly and the wiring.
3. Remove the two screws from the front cover of the vacuum cleaner and remove the front cover.
4. Remove the rear cover and unplug the switch wiring from the circuit board.
5. Remove the main body and take out the battery pack.

WARRANTY NOTICE

THIS WARRANTY GIVES YOU SPECIFIC RIGHTS, AND YOU MAY HAVE OTHER RIGHTS CONVEYED BY LAWS OF YOUR COUNTRY, PROVINCE OR STATE. INDEED, IN SOME COUNTRIES, PROVINCES OR STATES, CONSUMER LAW MAY IMPOSE A MINIMUM WARRANTY PERIOD. OTHER THAN AS PERMITTED BY LAW, XIAOMI DOES NOT EXCLUDE, LIMIT OR SUSPEND OTHER RIGHTS YOU MAY HAVE. FOR A FULL UNDERSTANDING OF YOUR RIGHTS WE INVITE YOU TO CONSULT THE LAWS OF YOUR COUNTRY, PROVINCE OR STATE.

1. LIMITED PRODUCT WARRANTY

XIAOMI warrants that the Products are free from defects in materials and workmanship under normal use and use in accordance with the respective Product user manual, during the Warranty Period.

The duration and conditions related to the legal warranties are provided by respective local laws. For more information about the consumer warranty benefits, please refer to Xiaomi's official website

<https://www.mi.com/global/support/warranty>.

Xiaomi warrants to the original purchaser that its Xiaomi Product will be free from defects in materials and workmanship under normal use in the period mentioned above.

Xiaomi does not guarantee that the operation of the Product will be uninterrupted or error free.

Xiaomi is not liable for damages arising from non-compliance with the instructions related to the use of the Product.

2. REMEDIES

If a hardware defect is found and a valid claim is received by Xiaomi within the Warranty Period, Xiaomi will either (1) repair the product at no charge, (2) replace the product, or (3) refund the Product, excluding potential shipping costs.

3. HOW TO OBTAIN WARRANTY SERVICE

To obtain warranty service, you must deliver the Product, in its original packaging or similar packaging providing an equal degree of Product protection, to the address specified by Xiaomi. Except to the extent prohibited by applicable law,

Xiaomi may require you to present proofs or proof of purchase and / or comply with registration requirements before receiving warranty service.

4. EXCLUSIONS AND LIMITATIONS

Unless otherwise stipulated by Xiaomi, this Limited Warranty applies only to the Product manufactured by or for Xiaomi and identifiable by the trademarks, trade name or "Xiaomi" or "Mi" logo.

The Limited Warranty does not apply to any (a) Damage due to acts of nature or God, for example, lightning strikes, tornadoes, flood, fire, earthquake or other external causes; (b) Negligence; (c) Commercial use; (d) Alterations or modifications to any part of the Product; (e) Damage caused by use with non-Xiaomi products; (f) Damage caused by accident, abuse or misuse; (g) Damage caused by operating the Product outside the permitted or intended uses described by Xiaomi or with improper voltage or power supply; or (h) Damage caused by service (including upgrades and expansions) performed by anyone who is not a representative of Xiaomi.

It is your responsibility to backup any data, software, or other materials you may have stored or preserved on the product. It is likely that the data, software or other materials in the equipment will be lost or reformatted during the service process, Xiaomi is not responsible for such damage or loss.

No Xiaomi reseller, agent, or employee is authorized to make any modification, extension, or addition to this Limited Warranty. If any term is held to be illegal or unenforceable, the legality or enforceability of the remaining terms shall not be affected or impaired.

Except as prohibited by laws or otherwise promised by Xiaomi, the after-sales services shall be limited to the country or region of the original purchase.

Products which were not duly imported and/or were not duly manufactured by Xiaomi and/or were not duly acquired from Xiaomi or a Xiaomi's official seller are not covered by the present warranties. As per applicable law you may benefit from warranties from the non-official retailer who sold the product. Therefore, Xiaomi invites you to contact the retailer from whom you purchased the product.

The present warranties do not apply in Hong Kong and Taiwan.

5. IMPLIED WARRANTIES

Except to the extent prohibited by applicable law, all implied warranties (including warranties of merchantability and fitness for a particular purpose) will have a limited duration up to a maximum duration of this limited warranty. Some jurisdictions do not allow limitations on the duration of an implied warranty, so the above limitation will not be applied in these cases.

6. DAMAGE LIMITATION

Except to the extent prohibited by applicable law, Xiaomi shall not be liable for any damages caused by accidents, indirect, special or consequential damages, including but not limited to loss of profits, revenue or data, damages resulting from any breach of express or implied warranty or condition, or under any other legal theory, even if Xiaomi has been informed of the possibility of such damages. Some jurisdictions do not allow the exclusion or limitation of special, indirect, or consequential damages, so the above limitation or exclusion may not apply to you.

7. XIAOMI CONTACTS

For customers, please visit the website: <https://www.mi.com/global/support/warranty>

The contact person for the after-sale service may be any person in Xiaomi's authorized service network, Xiaomi's authorized distributors or the final vendor who sold the products to you. If in doubt please contact the relevant person as Xiaomi may identify.



LOVEAIR

Instrukcja pobrana ze strony loveair.pl