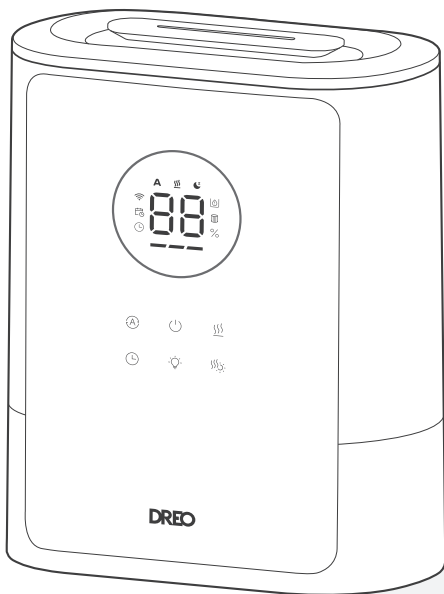


DREO

Cool & Warm Mist Humidifier HM717S

USER MANUAL



”

Thanks for Choosing **DREO!**

Your support means the world to us.
We hope you enjoy our product as much as
we did creating it.

EXTEND YOUR WARRANTY FOR FREE

Scan or visit [**dreocom.com/warranty**](https://dreocom.com/warranty)

To extend your warranty for free by registering your product.
If you have any product issues, we always stand ready to help.



support@dreocom.com



www.dreocom.com



(888) 290-1688

Mon - Fri, 9:00 am-5:00 pm PST/PDT

CONTENTS

01

IMPORTANT SAFETY INSTRUCTIONS

1-3

02

KNOWING YOUR HUMIDIFIER

4-7

03

CONNECTING TO YOUR HUMIDIFIER

8

04

USING YOUR HUMIDIFIER

9-11

05

CLEANING AND MAINTENANCE

12-18

06

TROUBLESHOOTING

19-20

07

DREO CUSTOMER CARE

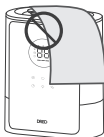
21-23

IMPORTANT SAFETY INSTRUCTIONS

01



READ ALL CAUTIONARY MARKINGS ON THE APPLIANCE AND SAFETY INSTRUCTIONS IN THE USER MANUAL BEFORE USE AND SAVE THESE INSTRUCTIONS



DO NOT block or cover the nozzle while in operation.



DO NOT touch or hold the mains plug with wet hands.



DO NOT let children or pets play with this appliance.

General Safety

- 1.Children shall not play with the appliance. Cleaning and maintenance shall not be performed by children without supervision.
- 2.Use the appliance as described in the user manual only. Any other use not recommended in the user manual may cause fire, electrical shock, or personal injury.
- 3.This appliance can be used by children aged above 8 years and persons with reduced physical, sensory or mental capabilities or lack of experience and knowledge if they have been given supervision or instruction concerning use of this appliance in a safe way and understand the hazards involved.

Location Safety

- 1.Always place this appliance on a firm, flat and level surface to avoid dropping or tilt.
- 2.Always place this appliance 2 feet (60cm) above the floor, 12 inches (30cm) away from the wall or wooden furniture.
- 3.DO NOT move this appliance while it is on.
- 4.DO NOT attempt to repair any parts on this appliance. Doing so will void your warranty. The inside of this appliance contains no user serviceable parts., All servicing should be performed by qualified personnel only.

Operation Safety

1. Never leave water in the reservoir when the appliance is not in use.
2. Do not permit the area around the humidifier to become damp or wet. If dampness occurs, turn the output of the humidifier down. If the humidifier output volume cannot be turned down, use the humidifier intermittently. Do not allow absorbent materials, such as carpeting, curtains, drapes, or tablecloths, to become damp.
3. Do not immerse in water and any other liquids.
4. Do not use the appliance until the base is installed.
5. Do not insert your fingers, pencil and any other objects into the grilles while in operation.
6. Warning: Micro-organisms that may be present in the water or in the environment where the appliance is used or stored, can grow in the water reservoir and be blown in the air causing very serious health risks when the water is not renewed and the tank is not cleaned properly every 3 days.
7. CAUTION: Mist may be hot in warm mist mode. Do not place your bare hands, face, or other exposed skin over the nozzles while using warm mist.

Electricity Safety

1. Make sure that the voltage of your electricity supply is the same as that indicated on the appliance.
2. Always unplug before cleaning or leaving the appliance unused for a long period of time. Keep your hands dry when plugging/unplugging.
3. To avoid fire hazard, NEVER put the cord under rugs, near heat registers, radiator, stoves or heaters.
4. Do not use this appliance if the cord has been damaged to avoid fire or electric hazard.
5. Keep the cord out of heavy traffic areas and where it will not be tripped over.
6. Do not operate any humidifier with a damaged cord or plug. Discard the appliance or return to an authorized service facility for examination and/or repair.
7. Do not run cord under carpeting. Do not cover cord with throw rugs, runners, or similar coverings. Do not route cord under furniture or appliances. Arrange cord away from traffic area and where it will not be tripped over.

8. **WARNING:** To reduce the risk of fire or electric shock, do not use this humidifier with any solid-state speed control device.
9. This appliance has a polarized plug (one blade is wider than the other). To reduce the risk of electric shock, this plug is intended to fit in a polarized outlet only one way. If the plug does not fit fully in the outlet, reverse the plug. If it still does not fit, contact a qualified electrician. Do not attempt to defeat this safety feature.

FOR HOUSEHOLD USE ONLY

Gentle Reminder



Check the appliance regularly and refer to TROUBLESHOOTING or contact our customer support if it shows any of the following signs:

- Power cord or plug is damaged.
- Loud noise, unusual smell or excessive heat.

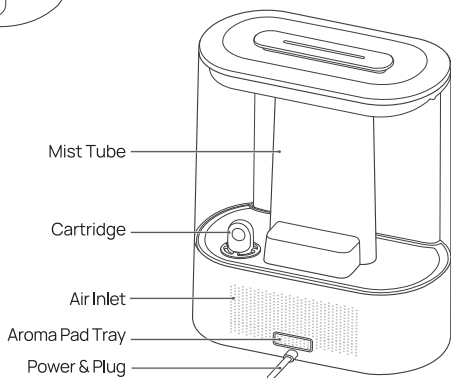
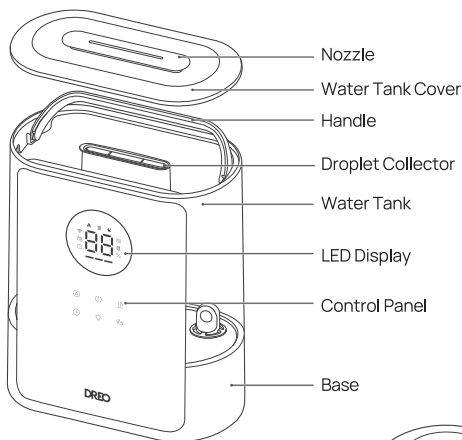
Specifications

Model No.	DR-HHM007S
Input	AC 120V 60Hz
Rated Power	29W (Cool) 300W (Warm)
Water Tank Capacity	2.1 Gal (8L)

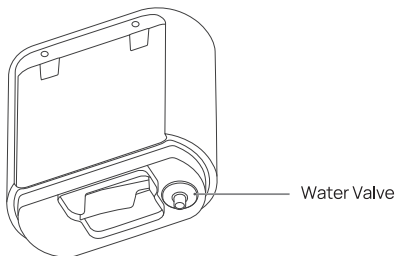
KNOWING YOUR HUMIDIFIER

02

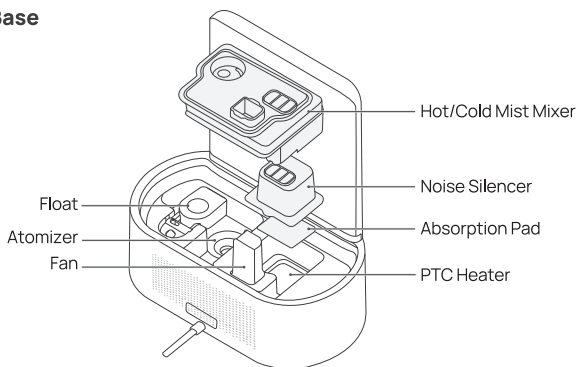
Package Contents



Bottom



Base



Quick Start Guide



Absorption Pad



Aroma Pad



Cleaning Brush

Control Panel



Power Button

- Turn the humidifier on/off.
- Long press for 7 seconds to restore WiFi and factory settings.



Manual Mode Button

Switch between Low/Medium/High mist level



Auto Mode Button

- Touch the Auto Mode button to increase the target humidity by 5%. (Target humidity ranges from 30% to 90%.)
- In Auto Mode, mist level is adjusted according to your target humidity.



Warm Mist Button

Turn warm mist off/on

Note: The warm mist is turned on by default.



Humidity Indicator Light

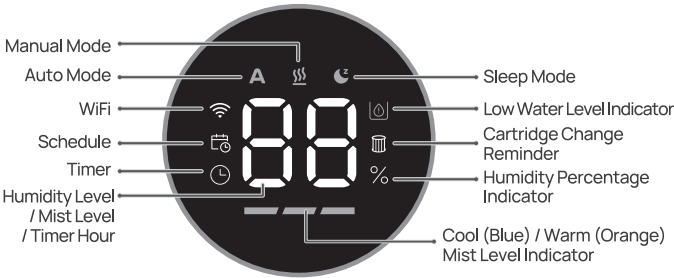
Turn the humidity indicator light on/off.



Timer /WiFi Settings

- Select to set a timer (0-12H)
- Long press for 5 seconds to enter WiFi settings.

LED Display



Note:

- When humidity levels are below 10%, the display will show “LO”.
- When humidity levels are above 90%, the display will show “HI”.
- When the water is low, the Low Water Level Indicator will flash for 5 seconds then the humidifier will switch to standby.
- The Sleep Mode, Schedule, and Cartridge Change Reminder are only available via the DREO app.

Humidity Indicator Light



The indicator light will change according to your room humidity level.

Light Color	Humidity Level
Yellow	≤30%
Green	31% - 60%
Blue	≥61%

CONNECTING TO YOUR HUMIDIFIER

03



Before connecting the appliance to your mobile device, please scan the QR code on the left or go to the app store and search “DREO”, then select and download the app.



Download on the
App Store



GET IT ON
Google Play

This device includes the radio transmitting module whose CMIIT ID is FCC ID: 2A3SYHHM007



You can use the DREO app to connect your smart appliance to **Amazon Alexa** or **Google Home**. Please follow the in-app instruction to set up your voice assistant.

NOTE: You must create a DREO account to access voice assistants.

- 1 Launch DREO and sign in or create account by following in-app instructions.
- 2 Enable Bluetooth on your smartphone and plug in your appliance.
- 3 Keep your smartphone close to your appliance. The DREO app will automatically detect your appliance and display a pairing prompt. (Note: The WiFi icon will keep flashing when pairing.)
- 4 If the device is not detected automatically, tap **+Add Device** and select **HM717S** manually.
- 5 Follow in-app instructions to complete WiFi connection.
- 6 You're now ready to control the appliance on your app.

Note:

- Long press  for 5 seconds to start/reset WiFi connection settings.
- Long press  for 7 seconds to unpair WiFi and restore factory settings.

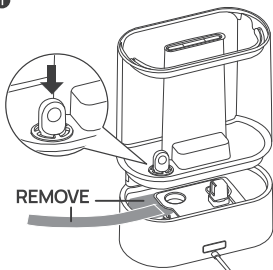
USING YOUR HUMIDIFIER

04

Before Use

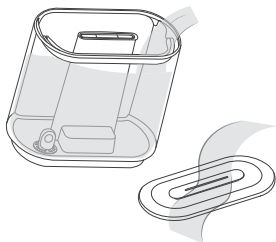
When using your humidifier for the first time, remove the wraps and follow the steps below.

1



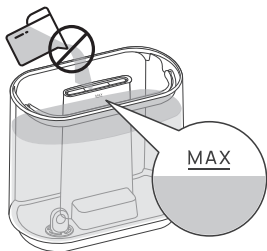
Make sure the cartridge is installed correctly and the label and the cardboard have been removed.

2



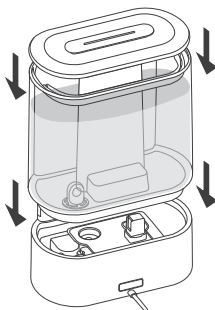
Detach the cover and water tank from the humidifier and clean thoroughly.

3



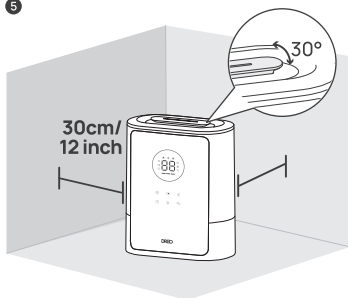
Fill the tank with water, making sure the water doesn't pass the MAX line.
Note: DO NOT add water into the mist tube.

4



Put the water tank back in place and close the top cover.

5



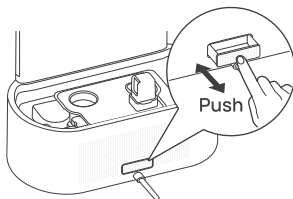
Place the humidifier on a flat, level surface, and rotate the nozzle to adjust the mist direction away from walls or any major obstacles.

ATTENTION:

- It is recommended to add purified or distilled water to prevent white powder residue from forming.
- Do not add essential oil into the water tank to avoid damage to the tank.
- Do not place the humidifier on the carpet or floor directly.
- Direct the mist away from walls, furniture and electrical appliances.
- It is recommended to place a water-resistant mat under the humidifier to catch spills and droplets.
- It is recommended that the humidifier be placed away from air purifiers or smoke alarms.

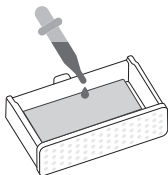
Adding Essential Oil

1



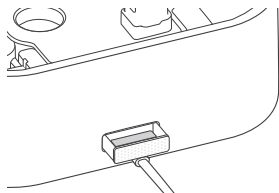
Push to open the aroma tray.

2



Add 5-10 drops of essential oil on the aroma pad.

3

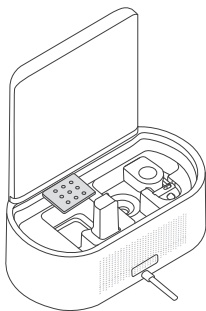


Put the aroma pad tray back in place.

Note:

- Add essential oils on the aroma pad only. Do not add into the water tank or any other places.
- The scent may be soft, this humidifier is not intended to work as an aroma diffuser.
- The scent level cannot be adjusted.
- If the aroma pad becomes too stiff, it needs to be replaced.

Absorption Pads



The mineral absorption pads help reduce mineral buildup (scale) inside the humidifier, especially on the heating element.

Note: The absorption can be reused after cleaning, but it is recommended to replace it regularly.

CLEANING AND MAINTENANCE

05

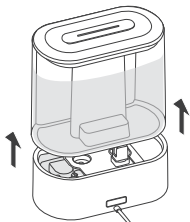
Scan the QR code to watch the cleaning and installation guide:



- Always turn off and UNPLUG the humidifier before any cleaning or maintenance.
- Do not clean the main body under running water.
- Do not let water splash into the air outlets.
- Do not use any chemical agents when cleaning the humidifier.
- Store in a cool, dry place and cover it to protect from dust.
- Do not overfilling the humidifier due to the potential risk of electric shock.

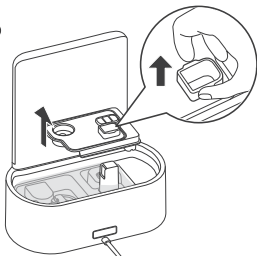
Cleaning

1



Detach the water tank from the base.

2



Remove the hot/cold mist mixer.

3



Take out the water tank cover, drain any remaining water from the tank and the base.

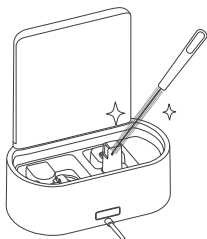
Note: If you've used the warm mist setting, use with caution in case the water is still hot.

4



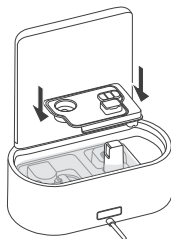
Rinse the tank with lukewarm water.

5



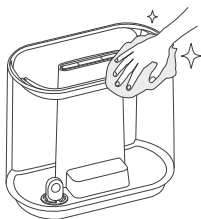
Gently clean the base with a soft cloth or the included cleaning brush.

6



Put the hot/cold mist mixer back in place.

7



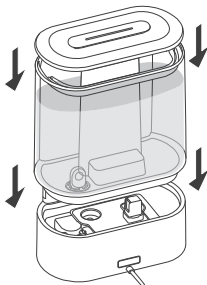
Wipe the tank clean with a soft, damp cloth.

8



Fill the tank with room temperature water. Do not fill with hot water.

9

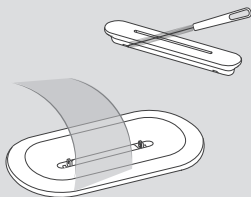


Attach the water tank to the base, replace the top cover.

Descaling

RECOMMENDED ONCE A MONTH

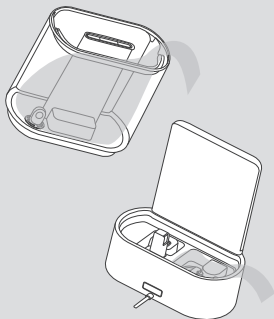
1



Detach the water tank from the base. Take out the water tank cover and rinse it with warm water.

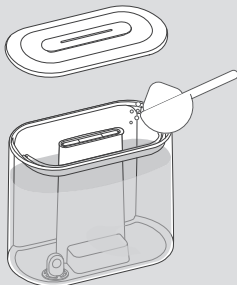
For a thorough cleaning, you may detach the nozzle from the cover and clean it with the included brush.

2



Drain any remaining water from the tank and the base.

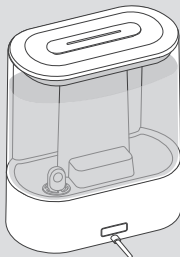
3



Fill the tank with a solution of citric acid and water (one teaspoon of citric acid for each gallon of water). Replace the tank cover and shake around the tank.

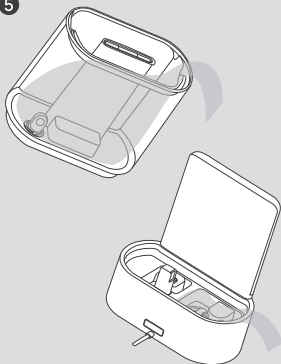
4

15-20min



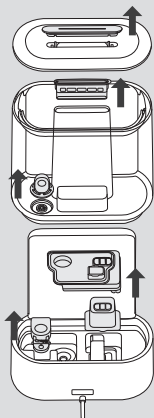
Attach the water tank to the base. Let it sit for 15-20 minutes.

5



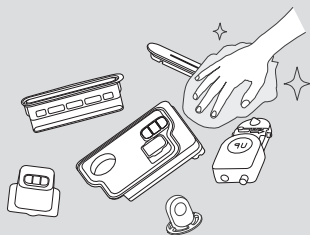
Remove the tank and detach the cover, drain any remaining solution from the tank and the base. Rinse the tank with water.

6



Remove the nozzle, droplet collector, cartridge, hot/cold mist mixer, noise silencer, and float.

7

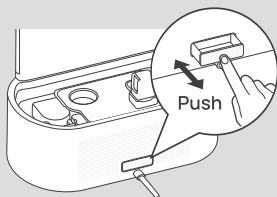


Clean all parts with a soft cloth, you may use the included cleaning brush to remove excess of mineral deposit. Make sure all parts are dry before reassembling your humidifier.

Cleaning the aroma pad tray

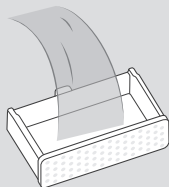
RECOMMENDED ONCE A WEEK

1



Pull out the aroma pad tray at the back of the base.

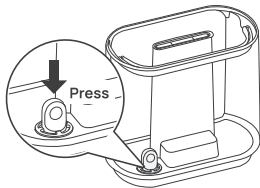
2



Rinse with water and place back into the base.

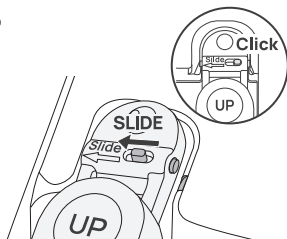
Reassembling

1



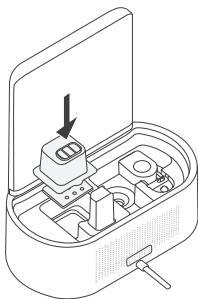
Place the cartridge back into the tank. Make sure the cartridge clicks in place.

2



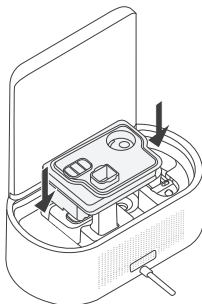
Fix the left prong on the bracket, then slide the other prong to secure the float in place.

3



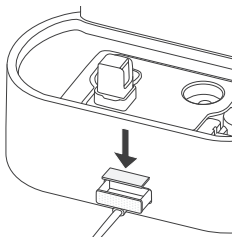
Place the absorption pad and the noise silencer back to the PTC heater.

4



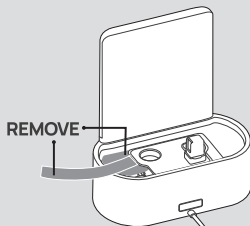
Place the hot/cold mist mixer back to the base.

5

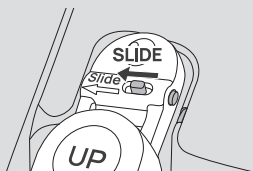


Place the aroma pad back into the aroma box.

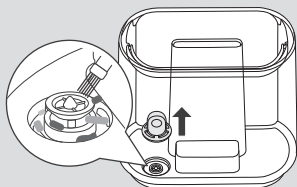
Is Your New Humidifier Leaking?



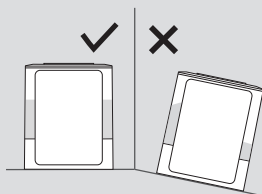
Make sure to remove the label and the cardboard.



Fix the left prong on the bracket, then slide the other prong to secure the float in place.

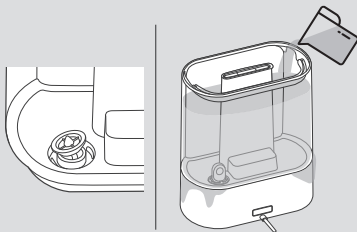


Remove any particles or hair blocking the water valve.

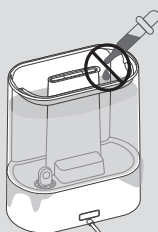


Make sure the humidifier is placed on a flat surface.

Contact Customer Service If...



The water valve is not flat or the tank leaks water when refilling.



Your water tank has leakage due to prolonged use of essential oils.

If your humidifier keeps leaking water, please contact customer support (see page 22).

My humidifier does not work.

1. Make sure that the cord is connected to a powered outlet and the mains voltage corresponds with the voltage indicated on the humidifier.
2. The humidifier will shut down automatically in the event of low water.
3. Check the water tank is installed properly.

My humidifier is not misting.

1. Please check whether the air inlet is blocked.
2. The water in water reservoir is nearly used up.
3. Your room might have too much ventilation. Please close doors and windows.

The mist produces an unpleasant smell.

1. Use purified or distilled water only. It is not recommended to use tap water.
2. Change water regularly to avoid dirty water accumulation.
3. Clean the humidifier and keep it dry for 12 hours with the cover detached.
4. Clean the aroma pad tray, change the aroma pad.

Water leaks from my humidifier.

1. Make sure the silicone sealing ring around the water outlet valve is secure.
2. Avoid running the humidifier in a room with over 60% relative humidity.
3. Wipe any excess water.
4. Do not shake the humidifier.
5. Make sure to place the humidifier on a flat, level surface.
6. Check the water tank for leaks. If there are leaks, contact Customer Support (see page 23).

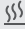
Humidifier uses water too quickly.

1. The humidifier uses up water based on the environmental temperature and humidity. If your environment is cold and/or dry, the humidifier will run out of water faster.
2. Using the warm mist function will use up water faster.
3. Switch to Auto Mode to adjust mist level based on your room's humidity.

White dust appears around the humidifier.

1. It is recommended to purchase the DREO replacement filter that filters out white dust.
2. Using purified or distilled water to fill the humidifier. Avoid using water with high mineral content, such as tap water.
3. Clean the humidifier regularly (see Cleaning & Maintenance, page 12).

Mist is not warm enough after pressing .

1. Press  to adjust the mist temperature from 113°F to 133°F.
2. Allow the humidifier to heat up for about 5-10 minutes to produce warm mist.
3. Clean and descale the heating element (see Cleaning & Maintenance, page 12).

Humidity in the room remains unchanged.

1. Use a higher mist level setting.
2. Depending on your environment, the humidifier may take longer to humidify your air.
3. The room may be larger than the humidifier's effective range. If the room is larger than 215–430 ft² / 20–40 m², the humidifier will not be as effective.

Default 12-Month Warranty

This appliance is covered by Dreco warranty for 12 months from the date of its original purchase.

Extend Your Warranty

Extend your warranty by registering your new appliance on our website <https://dreco.com/warranty>.

The warranty will not apply in cases of:

1. Accident, misuse, or repairs performed by unauthorized personnel.
2. Any unit that has been tampered with or used for commercial purposes.
3. Normal wear and tear of wearable parts.
4. Use of force, damage caused by external influences.
5. Damage caused by non-observance of the User Manual, e.g. connection to an unsuitable mains supply or noncompliance with the instructions.
6. Partially or completely dismantled appliances.
7. Defects caused by or resulting from damages from shipping or from repairs, service, or alteration to the product or any of its parts that have been performed by a repair person not authorized by DREO.

We can only provide after-sales service for products that are sold by DREO or DREO authorized retailers and distributors. If you have purchased your unit from a different place, please contact your seller for return and warranty issues.

FCC REQUIREMENT

Any changes or modifications not expressly approved by the party responsible for compliance could void the user's authority to operate the equipment. This device complies with Part 15 of the FCC Rules. Operation is subject to the following two conditions:

- (1) this device may not cause harmful interference, and
- (2) this device must accept any interference received, including interference that may cause undesired operation.

Note: This equipment has been tested and found to comply with the limits for a Class B digital device, pursuant to Part 15 of the FCC Rules. These limits are designed to provide reasonable protection against harmful interference in a residential installation. This equipment generates, uses, and can radiate radio frequency energy, and if not installed and used in accordance with the instructions, may cause harmful interference to radio communications. However, there is no guarantee that interference will not occur in a particular installation. If this equipment does cause harmful interference to radio or television reception, which can be determined by turning the equipment off and on, the user is encouraged to try to correct the interference by one or more of the following measures:

- Reorient or relocate the receiving antenna.
- Increase the separation between the equipment and receiver.
- Connect the equipment into an outlet on a circuit different from that to which the receiver is connected.
- Consult the dealer or an experienced radio/TV technician for help.

This equipment complies with FCC radiation exposure limits set forth for an uncontrolled environment. This equipment should be installed and operated with a minimum distance of 20cm between the radiator & your body. This transmitter must not be co-located or operating in conjunction with any other antenna or transmitter.

Model No.:DR-HHM007S
Rev_1.1_EN

We're Here to Help!

 (888) 290-1688 Mon - Fri, 9:00 am-5:00 pm PST/PDT

 www.dreo.com

 support@dreo.com

 Shenzhen Hesung Innovation Technology Co., LTD

 26F, Bldg A7, Creative City, Shenzhen, China



MADE IN CHINA



Intertek



LOVEAIR

Instrukcja pobrana ze strony loveair.pl

www.dreo.com

Looking for help?

Contact us to get expert support.



support@dreo.com



[\(888\) 290-1688](tel:(888)290-1688)



www.dreo.com

Mon - Fri, 9:00 am-5:00 pm PST/PDT